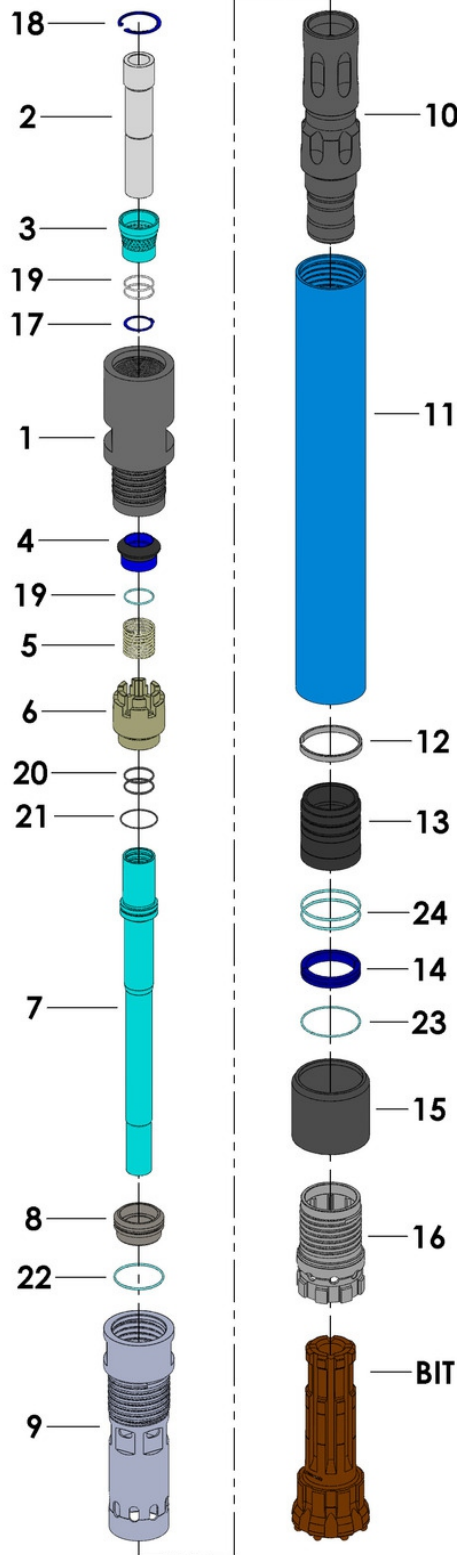
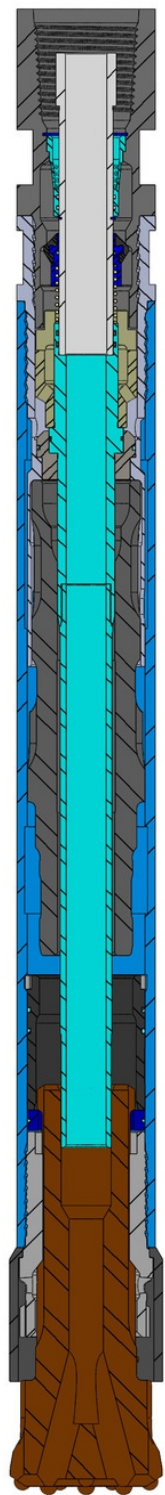


# Reverse Circulation Hammer CR54



| ITEM | ITEM DESCRIPTION            | WEIGHT (KG) | NUMBER  |
|------|-----------------------------|-------------|---------|
| 1    | TOP SUB                     | 12,385      | CR54-01 |
| 2    | ADAPTOR SCREEN              | 2,073       | CR54-02 |
| 3    | AIR SCREEN                  | 0,393       | CR54-03 |
| 4    | CHECK VALVE                 | 0,340       | CR54-04 |
| 5    | (VALVE) SPRING              | 0,092       | CR54-05 |
| 6    | AIR DISTRIBUTOR             | 1,860       | CR54-06 |
| 7    | SAMPLE TUBE                 | 5,899       | CR54-07 |
| 8    | MOUNT SAMPLE TUBE           | 1,044       | CR54-08 |
| 9    | INNER CYLINDER              | 8,237       | CR54-09 |
| 10   | PISTON                      | 16,983      | CR54-10 |
| 11   | WEAR SLEEVE                 | 22,967      | CR54-11 |
| 12   | STOP RING                   | 0,160       | CR54-12 |
| 13   | BUSH DRIVE SUB              | 2,652       | CR54-13 |
| 14   | BIT RET. RING               | 0,448       | CR54-14 |
| 15   | SHROUD                      | 3,501       | CR54-15 |
| 16   | DRIVE SUB                   | 5,124       | CR54-16 |
| 17   | CIRCLIP                     | 0,010       | CR54-17 |
| 18   | CIRCLIP                     | 0,025       | CR54-18 |
| 19   | O-RING PARKER 2-136 (3 PÇS) | 0,001       | CR54-19 |
| 20   | O-RING PARKER 2-226 (2 PÇS) | 0,002       | CR54-20 |
| 21   | O-RING PARKER 2-145         | 0,001       | CR54-21 |
| 22   | O-RING PARKER 2-237         | 0,003       | CR54-22 |
| 23   | O-RING PARKER 2-155         | 0,002       | CR54-23 |
| 24   | O-RING PARKER 2-243 (2 PÇS) | 0,004       | CR54-24 |

## TECHNICAL DATA

| LENGTH (LESS BIT) | WEIGHT (LESS BIT) | DIAMETER                   | BIT SHANK | DRILLING RANGE  | CONNECTION THREAD |
|-------------------|-------------------|----------------------------|-----------|-----------------|-------------------|
| 1252 mm           | 84 Kg             | Ø 130 mm                   | PR - 54   | Ø 5.1/2" - Ø 6" | METZKE 4.1/2" (F) |
| WORKING PRESSURE  | IMPACTE RATE      | RECOMMENDED ROTATION SPEED |           | AIR CONSUMPTION |                   |
| 15 - 35 BAR       | 35 Hz             | 25 - 40 rpm                |           | 508 - 1016 PSI  |                   |