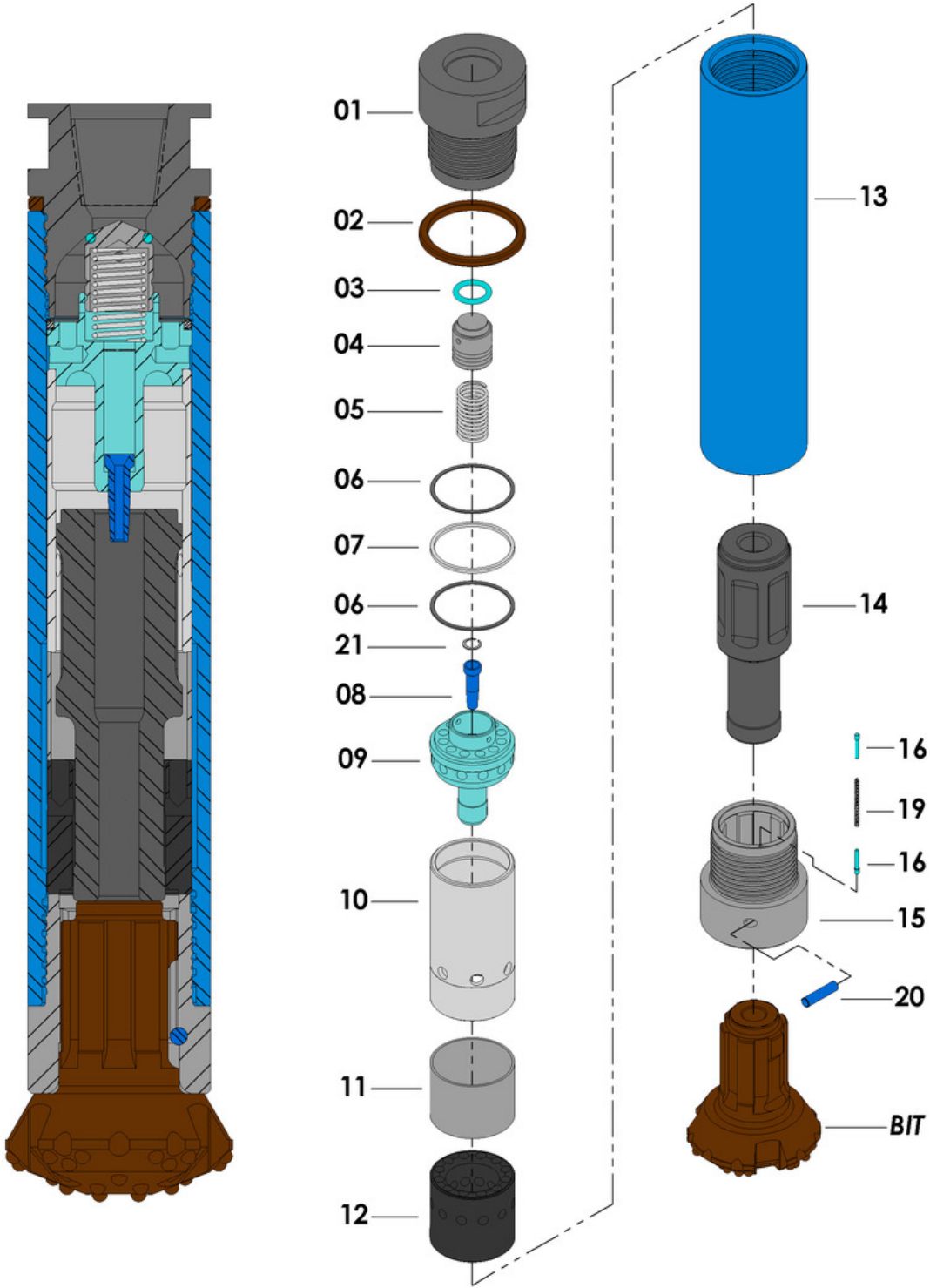


# TIGER 200 - DTH Hammer



ITEM	ITEM DESCRIPTION:	WEIGHT (KG)	PART CODE
01	TOP SUB	22,564	TG200-01
02	SPACE RING	0,912	TG200-02
03	VALVE SEAL	0,014	TG200-03
04	CHECK VALVE	0,92	TG200-04
05	VALVE SPRING	0,25	TG200-05
06	WASHER	0,067	TG200-06
07	O'RING	0,047	TG200-07
08	GUIDE TUBE	0,187	TG200-08
09	AIR DISTRIBUTOR	6,133	TG200-09
10	SUPERIOR CYLINDER	7,591	TG200-10
11	MEDIAN CYLINDER	1,781	TG200-11
12	INFERIOR CYLINDER	9,32	TG200-12
13	WEAR SLEEVE	58,44	TG200-13
14	PISTON	24,434	TG200-14
15	DRIVE SUB	16,97	TG200-15
16	STOP PIN	0,014	TG200-16
19	DRIVE SUB SPRING	0,003	TG200-19
20	BIT PIN	0,1	TG200-20
21	CIRCLIP	0,014	TG200-21

## TECHNICAL DATA

LENGTH (LESS BIT)	WEIGHT (LESS BIT)	EXTERNAL DIAMETER	BIT SHANK	HOLE RANGE	CONNECTION THREAD
1017 mm 40 in	160 Kg 353 lb	Ø 185 mm Ø 7.1/4"	CIR – 200HJ	Ø 215 – Ø 305 mm Ø 8.1/2" - Ø 12"	3 1/2" FH (F)
WORKING PRESSURE	IMPACTE RATE	RECOMMENDED ROTATION SPEED		AIR CONSUPTION (100 PSI)	
80 – 250 PSI 5,4 – 16,7 BAR	13 Hz	25 – 40 rpm		862 PCM	